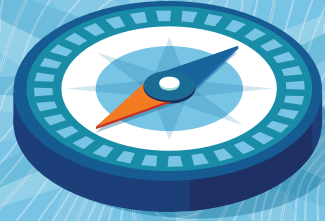




NATIONAL SOCIETY OF  
PROFESSIONAL ENGINEERS

# BOARD of ETHICAL REVIEW



**Since its founding, NSPE has been the profession's most respected voice on the practice of ethical engineering. NSPE's dedication to professional ethics is integral to the mission, values, and goals outlined in the organization's strategic plan. As a multi-disciplinary organization, NSPE can provide members with many different perspectives on ethical issues that you will not get from a technical society.**

The engineering profession's emphasis on ethics dates back to the end of the 19th century. In 1946, NSPE released its Canons of Ethics for Engineers and Rules of Professional Conduct, which evolved to today's [Code of Ethics](#), originally adopted in 1964.

The Board of Ethical Review (BER) was created in 1954 to handle the many requests for interpretations of the Code. Ethics cases rarely have easy answers, but the BER's nearly 650 advisory opinions have helped bring clarity to the ethical issues engineers face daily.

Although engineers often make decisions using precise scientific principles, answers to ethical questions are often varying shades of gray. To help Professional Engineers navigate ethical issues, NSPE provides members with a wide selection of ethics resources. Whether you are a student, and EIT/EI, a new PE, or an experienced PE, you will encounter ethical problems in your career. The problem could be addressing the behavior/performance of a colleague or making a difficult decision on your own behalf. NSPE has resources to help engineers navigate the ethical dilemmas they will face throughout their career.

To learn more about NSPE ethic resources, [please visit our website](#).

**Frequently asked questions:** Questions most frequently raised by members calling the Licensure and Ethics Hotline have been compiled, so that you can [start there](#).

**Licensure and Ethics Hotline for Members Only:** NSPE members with questions about engineering licensure or ethics have exclusive access to the Licensure and Ethics Hotline at 888-384-4295 or e-mail at [legal@nspe.org](mailto:legal@nspe.org). Please provide your nine-digit NSPE member number. For all other types of questions, please call 888-285-6773.

**Board of Ethical Review (BER) Cases:** The Board of Ethical Review is a panel of engineering ethics experts that has served as the profession's guide through ethical dilemmas. New cases are released each year by the BER. These cases are available by year and date back to the 1950s. Convenient keyword search is also available to facilitate the identification of cases relevant to your concern. The BER has also developed the [Ethics Reference Guide](#) to help users make the best and easiest use of the [BER case archives](#).



**You Be The Judge:** The archives of ethics case summary articles [are stored here](#).

**Engineering Ethics Videos:** A [compilation of case study videos](#) from a variety of sources that can be used by state societies and local chapters for educational programming.

**Other ethics resources:** As with the Engineering Ethics Videos, NSPE has compiled a list of websites and articles with additional engineering pursue ethics information.

*Interested in testing your understanding of engineering ethics? NSPE provides tools to that goal, too.*

**NSPE Ethics Study Guide:** This study guide includes information about the ethics test, steps to ethical engineering decisions, key concepts in engineering ethics, and much more. [Download the NSPE Ethics Study Guide](#) (PDF).

**Ethics examination:** By taking the [ethics self-examination](#), you can test your knowledge of the NSPE Code of Ethics.

**Education, publications & products:** NSPE has a comprehensive offering of [ethics education resources and tools](#).

**Milton F. Lunch Ethics Contest:** This [ethics competition](#) offers all NSPE members the opportunity to weigh in on an ethics issue.

**State Licensing Requirements:** Carefully monitor the professional development [requirements](#) of the licensing boards in each state in which you are licensed to assure that you fulfill requirements for both duration and frequency of ethics training.

For more information, contact the Sr. Director of Ethics and Professional Practice, Rebecca Bowman, Esq., P.E., D.F.E. at [Rbowman@nspe.org](mailto:Rbowman@nspe.org).